



SAILING

NATIONAL SCHOOL GAMES 2024

22-25 April 2024

Singapore Primary Schools Sports Council &
Singapore Schools Sports Council
Sailing Organising Committee

SAILING INSTRUCTIONS

The notation '[DP]' in a rule in the SI means that the penalty for a breach of that rule may, at the discretion of the protest committee, be less than disqualification.

The notation of '[NP]' denotes that a breach of this rule will not be grounds for a protest by a boat. This changes RRS 60.1(a).

1 RULES

1.1 The regatta will be governed by the rules as defined in The Racing Rules of Sailing (RRS) 2021-2024. Other document under RRS Definition: Rule (g) includes:

- 1.1.1 General Rules and Regulation of the SPSSC and SSSC
- 1.1.2 The Baseline Safety Standards for National School Games
- 1.1.3 Regatta Support Vessel Regulation, see Attachment 4

1.2 For RRS 40 PERSONAL FLOTATION DEVICES; LIFE-SAVING EQUIPMENT, add on after the rule, the following: "Singapore Sailing Federation prescribes that every boat shall carry life-saving equipment conforming to government regulations that apply in the racing area."

1.3 Schools are to ensure that the boats being used at the event are registered with the Maritime Port Authority (MPA) of Singapore. Schools that failed to do so would be given DSQ for the day of competition. This changes RRS 63.1 and RRS A5.

1.4 RRS Appendix G3, CHARTERED OR LOANED BOATS, will apply.

1.5 The infringement of RRS Appendix G, IDENTIFICATION ON SAILS, shall not be grounds for protest by a boat. *[NP]*

1.6 The penalty for a breach of Class rules may, at the discretion of the Jury, be less than a disqualification. *[DP]*

1.7 RRS Appendix P, *Special Procedures for Rule 42*, will apply.

1.8 Rule 70.5(b) will apply.

1.9 If there is a conflict between languages the English text will take precedence.

2 NOTICES TO COMPETITORS

2.1 Notices to competitors will be posted on the official notice board(s) located

<https://www.racingrulesofsailing.org/documents/8383/event?name=national-school-games-sailing-championships-2024>.

3 CHANGES TO SAILING INSTRUCTIONS

3.1 Any change to the sailing instructions will be posted at least 1 hour before the displaying of 'D' flag on the day it will take effect, except that any change to the schedule of races will be posted by 5.30 pm on the day before it will take effect.

4 SIGNALS MADE ASHORE

- 4.1 Signals made ashore will be displayed on a flagstaff located within the boat park of National Sailing Centre. When a signal is displayed over an area or class flag, it applies to that area or class only.
- 4.2 Flag D with one sound means 'The warning signal will be made not less than 30 minutes after flag D is displayed. Boats are requested not to leave the beach until this signal is made.'
[DP] [NP]

5 SCHEDULE OF RACES

5.1

Date	Class / Division	Race Area	Warning Signal for 1 st Race
22 & 23 April 2024	ILCA 6 – A DIV Boys	A	1100 h
	ILCA 4 – B DIV Girls		
	ILCA 4 – C DIV Boys		
	Optimist – C DIV Girls	B	
	Optimist – Senior DIV Boys		
	Optimist – Junior Boys: White Fleet	C	
	Optimist – Junior Girls: White Fleet		
Date	Class / Division	Race Area	Warning Signal for 1 st Race
24 & 25 April 2024	ILCA 6 – A DIV Girls	A	1100 h
	ILCA 4 – B DIV Boys		
	ILCA 4 – C DIV Girls		
	Optimist – C DIV Boys	B	
	Optimist – Senior DIV Girls		
	Optimist – Junior Boys: Green Fleet	C	
	Optimist – Junior Girls: Green Fleet		
26 April 2024	Reserve date	-	1100 h

5.2 Number of races:

<i>Events</i>	<i>Total no. of scheduled races</i>	<i>Races per day</i>
A, B and C Div Senior Div Junior (White) Div	7	Not more than 4
Junior (Green) Div	6	Not more than 3 (excluding practice race)

5.3 To alert boats that a race or sequence of races will begin soon, the orange starting line flag will be displayed with one sound at least five minutes before a warning signal is made.

5.4 On the 23 April 2024, no warning signal will be made after 1500 h.

5.5 On the last day of the championships, no warning signal will be made after 1500 h.

5.6 Skippers' briefing will be held on 22th and 24 April at 9.30am in the auditorium at National Sailing Centre.

6 CLASS FLAGS & IDENTIFICATION

6.1 Class flags will be:

Class	Flag
Optimist Junior White & Green Fleet	Optimist Insignia logo with white background
Optimist C Div	Numeral Pennant 1
Optimist Senior	Numeral Pennant 2
ILCA 4 C Div	ILCA Insignia with <u>Green</u> background
ILCA 4 B Div Boys	Numeral Pennant 1
ILCA 4 B Div Girls	Numeral Pennant 2
ILCA 6 A Boys	ILCA Insignia with <u>White</u> background
ILCA 6 A Girls	ILCA Insignia with <u>Yellow</u> background

6.2 The following classes and divisions are required to collect a coloured ribbon from the Race Control Office to be attached to their sail while racing.

Class/Division	Colour of ribbon	Location on the sail
Optimist Junior Girls	Red	Top of the sprit

7 RACING AREAS

7.1 Attachment 1 shows the location of racing areas.

8 THE COURSES

8.1 The diagrams in Attachment 2 show the courses, including the order in which marks are to be passed, and the side on which each mark is to be left.

9 MARKS

9.1 Marks 1, 2, 3 and 4, or associated gate marks, will be as follows:

Area	Marks 1, 2, 3s, 3p, 4s, 4p	New Mark	Starting line mark	Finishing line mark
A	Yellow Conical	White Spherical	Red Spherical	Blue Spherical
B	Orange Conical	White Spherical	Red Spherical	Blue Spherical
C	Yellow Conical	White Spherical	Red Spherical	Blue Spherical

9.2 A race committee boat signalling a change of a leg of the course is a mark as provided in instruction 11.2.

10 THE START

10.1 Races will be started by using rule 26 with the warning signal made 5 minutes before the starting signal.

10.2 For all Course Areas, the starting line will be between a staff displaying an orange flag on the committee boat at the starboard end and a red mark at the port end.

10.3 Boats whose warning signal has not been made shall avoid the starting area during the starting sequence for other races. *[DP] [NP]*

10.4 A boat starting later than 4 minutes after her starting signal will be scored Did Not Start without a hearing. This changes rule RRS A4.

11 CHANGE OF THE NEXT LEG OF THE COURSE

11.1 To change the next leg of the course, the race committee will lay a new mark (or move the finishing line) and remove the original mark as soon as practicable. When in a subsequent change a new mark is replaced, it will be replaced by an original mark.

11.2 Except at a gate, boats shall pass between the race committee boat signalling the change of the next leg and the nearby mark, leaving the mark to port and the race committee boat to starboard. This changes rule 28.

12 THE FINISH

12.1 The finishing line will be between a staff displaying a blue flag on the finishing boat at the port end and a blue mark on the starboard end, except if the finish leg is an upwind leg, whereby the finishing boat will be at the starboard end and a blue mark on the port end.

13 PENALTY SYSTEM

13.1 RRS Appendix P, *Special Procedures for Rule 42*, will apply as changed by SI 13.2.

13.2 Rule P2.3 will not apply and rule P2.2 is changed so that it will apply to any penalty after the first one.

13.3 For the Optimist Class, a graded penalty system as set out in Attachment 3 shall apply.

14 TIME LIMITS AND TARGET TIMES

14.1 Time limits and target times are as follows:

Class	Time limit	Mark 1 time limit	Target time	Finish window
Optimist (Green Fleet)	45	20	30	15
Optimist	60	30	40	20
ILCA 4				
ILCA 6				

14.2 If no boat has passed Mark 1 within the time limit, the race will be abandoned. Failure to meet the target time will not be grounds for redress. This changes rule 62.1(a).

15 PROTEST AND REQUESTS FOR REDRESS

- 15.1 Add to rule 61.1(a) “The protesting boat shall inform the Race Committee of the boat/s being protested at the finishing line as soon as possible after finishing.”
- 15.2 Protest forms are available at the race control office. Protests and requests for redress or reopening shall be delivered by the Team Manager of the sailor at the race control office within the protest time limit (refer to Attachment 5).
- 15.3 For each class, the protest time limit is 60 minutes after the last boat has finished the last race of the day or the race committee signals no more racing today, whichever is later.
- 15.4 Notices will be posted no later than 30 minutes after the protest time limit to inform competitors of hearings in which they are parties or named as witnesses. Hearings will be held in the protest room, located on the 2nd floor of the main building.
- 15.5 Notices of protests by the race committee or protest committee will be posted to inform boats under rule 61.1(b).
- 15.6 A list of boats that, under instruction 13.1, have been penalised for breaking rule 42 will be posted.
- 15.7 Decision of the Protest committee shall be final as provided in rule 70.5(b).
- 15.8 On the 23 April and 25 April 2024, a request for redress based on a protest committee decision shall be delivered no later than 30 minutes after the decision was posted. This changes RRS 62.2.
- 15.9 Only schools may further lodge a Notices of Appeal with the Secretary of the Council as prescribed in the Rules and Regulation of the SPSSC and SSSC Item 13.
- 15.10 On 23 April and 25 April 2024, a request for opening a hearing shall be delivered:
- (a) Within the protest time limit if the requesting party was informed of the decision on the previous day;
 - (b) No later than 30 minutes after the requesting party was informed of the decision on that day. This changes RRS66.

16 SCORING

- 16.1 At least 1 (one) race is required to be completed to constitute a Championship.
- 16.2 (a) When fewer than 4 races have been completed, a boat’s series score will be the total of her race scores.

- (b) When from 4 or more races have been completed, a boat's series score will be the total of her race scores excluding her worst score.

- 16.3 The sum of the best three positions from each school shall be used to determine the Division Championship results in each division (excluding Junior Division). Should a school have only 2 entries, a Ghost Entry will be used to calculate the score.
- 16.4 Ghost Entry points will be given based on the overall results at the end of the championship with 1 added point.
- 16.5 Ghost Entry points for 'C' Division Championships will be given based on the overall results at the end of the championship with 1 added point to the class of boat with the higher number of sailors.
- 16.6 In the event of a tie in school ranking, each tied school's best three positions will be compared. The school with the greatest number of top individual positions, starting with the number of firsts, then seconds and so on, shall be awarded the higher placing. If the tie still cannot be broken then, both schools will be awarded the same placing.
- 16.7 There will be no Division Championship titles for the Junior Divisions.

17 SAFETY REGULATIONS: CHECK-OUT AND CHECK-IN PROCEDURES

- 17.1 The Team Manager (TM) of the school shall **personally check-out** for all of the students racing before they leave the shore for any race or racing period and shall **personally check-in** for all students from racing upon returning to shore or retiring from the race or racing period at the National Sailing Centre. The check-in period will end one hour after the completion of the last race of the respective race area. The Organising Committee, at its discretion, may extend the time permitted to check-in. *[NP]*
- 17.2 If more than one race is sailed in a day, failure to check-out will result in disqualification from the first race of the day and failure to check-in will result in the disqualification from the last race of the day. Failure to check-out and check-in will result in disqualification from all races of that day. *[NP]*
- 17.3 A boat that retires from a race shall notify the race committee as soon as possible. *[NP]*

18 REPLACEMENT OF CREW OR EQUIPMENT

- 18.1 Substitution of competitors will not be allowed.
- 18.2 Substitution of damaged or lost equipment will not be allowed unless authorised by the race committee. Requests for substitution shall be made to the organising committee at the first reasonable opportunity. *[DP]*

19 OFFICIAL BOATS

- 19.1 Official boats will be marked as follows:
Jury/Judges – White flag with letter "J"
Race Committee – Yellow flag with black letter corresponding to course area
Rescue or Course Marshall – Yellow flag with black letter corresponding to course area

20 SUPPORT VESSELS

- 20.1 Support Vessel Regulation (SVR) shall apply. Please see Attachment 4. *[DP][NP]*

21 TRASH DISPOSAL

- 21.1 Trash may be placed aboard support or official boats.

22 RADIO COMMUNICATION

- 22.1 Except in an emergency, a boat that is racing shall not make voice or data transmissions and shall not receive voice or data communication that is not available to all boats. *[DP][NP]*

23 PRIZES

23.1 The number of prizes to be awarded up to top 8 positions for individual awards at the Junior and Senior Divisions competitions shall be as follows:

No. of Participants/Teams	Position/Medals Awarded
3-4	2
5-6	3
7-8	4
9-10	5
11-12	6
13-14	7
15 and more	8

23.2 The form of the medals awarded shall be as follows:

Position	Form of Medals
1 st	Gold
2 nd	Silver
3 rd	Bronze
4 th	
5 th	
6 th	
7 th	
8 th	

23.3 For Sec/JC, medals will be awarded up to top 4 individual positions for each division and class for the A, B, and C divisions.

23.4 The overall division championship trophy will be given to the overall division champion for A, B, C and Senior Divisions

23.5 There will be no division titles for Junior Division or trial events.

23.6 The prize presentation ceremonies will take place on Tuesday, 23 April 2024 and Thursday, 25 April 2024 at the NSC multipurpose hall.

24 TEAM MANAGER(S)

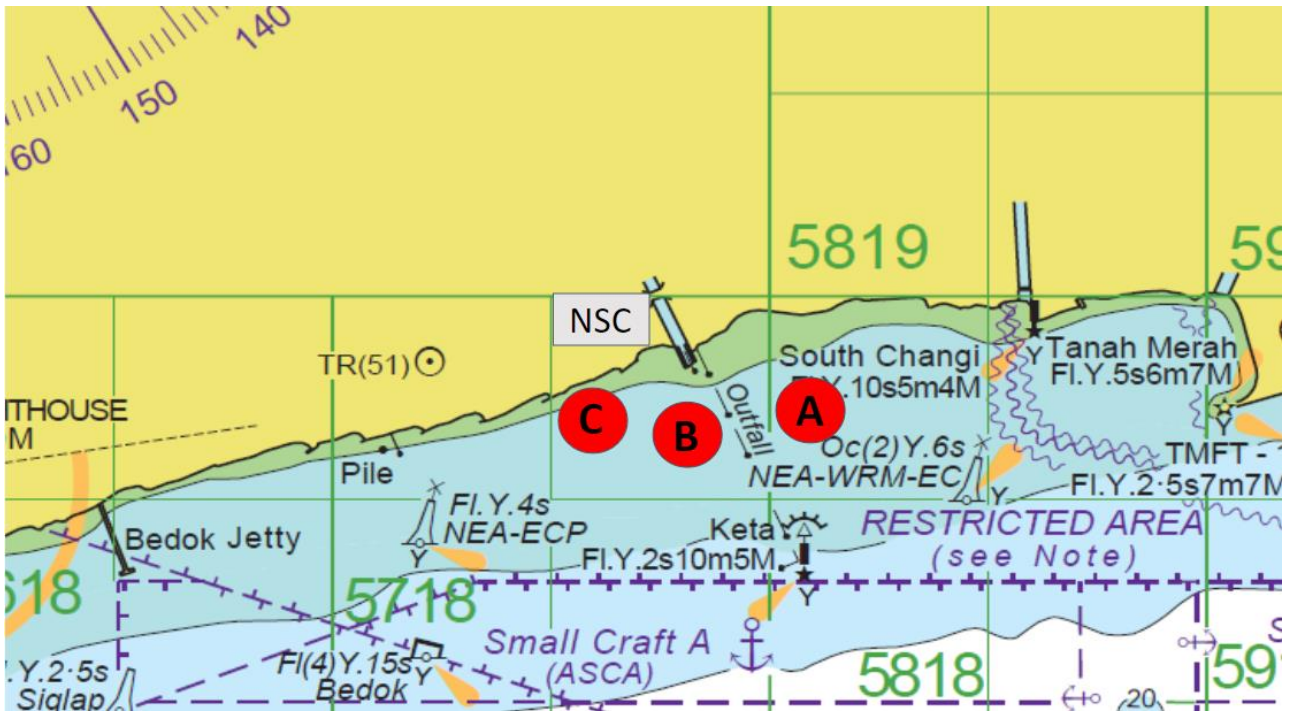
24.1 Each participating school must be accompanied by the team manager(s) who shall remain with the team throughout the competition. Failure to comply with this rule may lead to the disqualification of the school's team(s) concerned. *[NP]*

25 BOAT CHARTERS

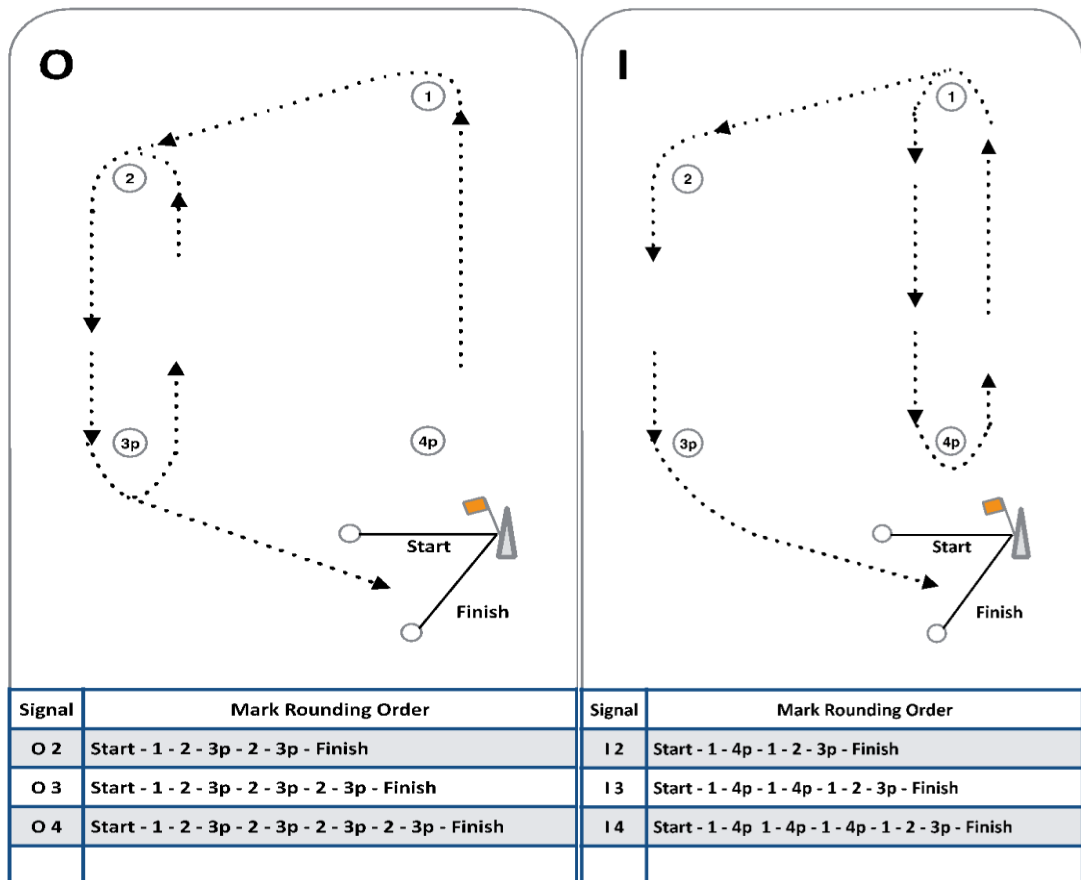
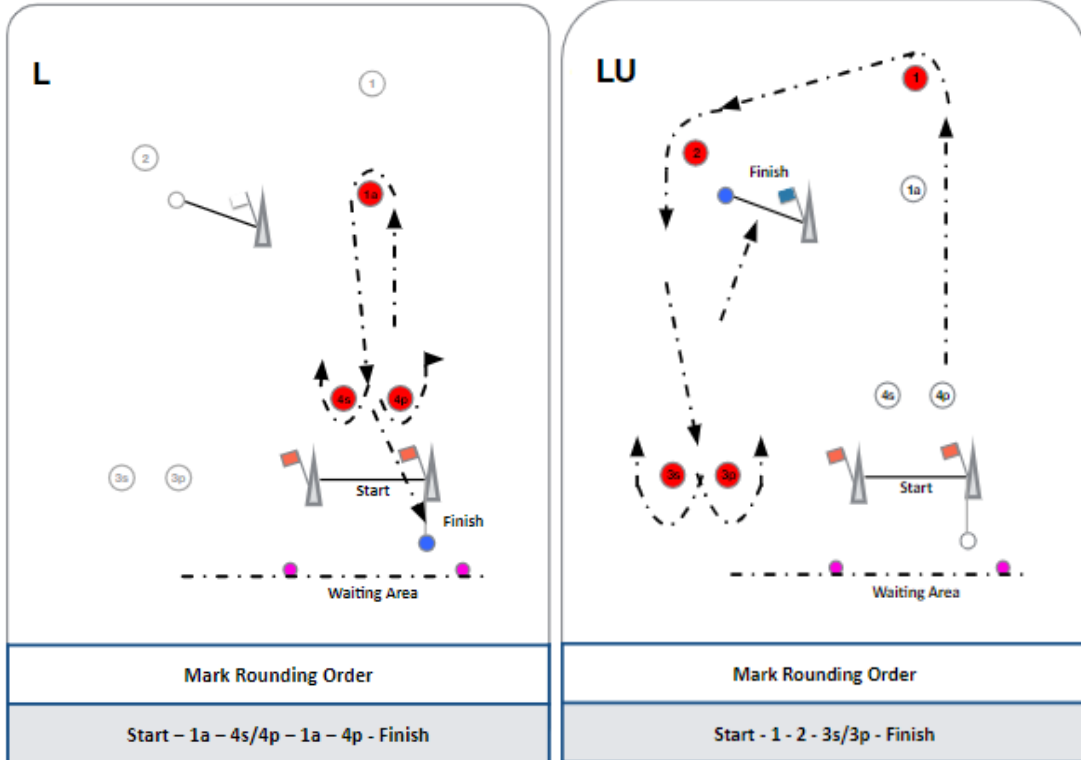
25.1 Schools must send in all boat charter request to Shawal@singaporesailing.org.sg

25.2 Charter requests should consist of student name, type of boat, the duration and division.

ATTACHMENT 1
Racing Areas



ATTACHMENT 2



ATTACHMENT 3

Graded Penalty System

Minor (technical) penalties

Penalty approximately equal to 5% of fleet

- Not displaying the coloured ribbon (SI 6.2)

Intermediate penalties

Penalty equivalent to 10% of fleet

- Baler not attached to the hull (CR 4.3)
- Paddle not attached to the hull (CR 4.3)
- Daggerboard not attached to the hull (CR 3.3.4)
- Painter not attached to the mast step or mast thwart (CR 4.3)
- Whistle not attached to personal flotation device (CR 4.2)
- Breaches of SI 21 Trash disposal
- One sail tie more than 5mm loose (CR 6.6.3.4)
- Two sail ties more than 3mm loose (CR 6.6.3.4)
- Accidental loss of sail tie (CR 6.6.3.4)
- Sailing across a race in progress before starting or after finishing (SI 10.3)

Major penalties

Penalty equivalent to 30% of fleet

- No bailer, paddle or painter in boat (CR 4.3)
- No whistle (CR 4.2)
- No lanyard, locking device or other arrangement to attach mast to the hull (CR 3.5.2.11)
- Sail outside limits of bands (CR 3.5.2.7)
- Two ties looser than 5 mm (CR 6.6.3.4)
- Three or more ties looser than 3 mm (CR 6.6.3.4)
- Throat, tack or clew eyelet more than 3mm loose (CR 6.6.3.4)
- Repeated intermediate penalty

Disqualification (as per RRS)

- All RRS except as amended
- All SI except as amended
- All Optimist Class Rules except as amended
- Use of unapproved fittings
- Repeat of major penalty infringement

ATTACHMENT 4

REGATTA SUPPORT VESSEL REGULATIONS (SVR) [NP] [DP]

1. GENERAL

- 1.1. This Regatta Support Vessel Regulation shall apply at all times while support persons are at the venue or on the field of play.
- 1.2. For the purposes of these regulations, a coach vessel includes any vessel that is under the control or direction of a person who is or may provide physical or advisory support to an athlete, including the gathering of data that may be used at a later time.
- 1.3. The Organizing Authority may inspect vessels at any time to ensure that they comply with these regulations, and the person responsible for the vessel shall facilitate such inspection.
- 1.4. An alleged breach of any of these regulations may be referred to the Jury for a hearing. As a result of the hearing the Jury may take action under RRS 64.4 or exclude the person from the event or venue or remove any privileges or benefits for a specified period or for the remainder of the competition. Note also, action may be taken under RRS 69.2.
- 1.5. The Organizing Authority may change these regulations at any time. Any changes will be posted on the Official Notice Board.
- 1.6. The Organizing Authority may, at its discretion, refuse to register coach vessels not deemed to be suitable. Generally, open vessels more than 4.0m and less than 7.5m in length and having minimal or no superstructure (cabin, coach house, bridge, etc.) are considered suitable.
- 1.7. All support vessels shall register at the regatta office before the first race and collect identification flags, to be displayed at all time whilst on water.
- 1.8. Support vessels designated drivers shall attend Coach/Team Leaders' Safety Meeting held in the auditorium daily.
- 1.9. Each vessel shall be insured with valid third-party liability insurance with a minimum coverage of S\$ 1,500,000 (or equivalent) per incident.
- 1.10. Only registered persons may be designated drivers.
- 1.11. The person registering the coach vessel shall confirm that:
 - a) A valid insurance certificate showing proof of third-party liability coverage as required by 1.8 has been obtained; and
 - b) Each designated driver has a motorboat-driving licence recognized by a national authority appropriate to that vessel or PPCDL.

2. SAILING VENUE

- 2.1. Coach vessels shall use the designated slipway/area for launching. Once launched, trailers shall be moved immediately to the trailer park or as otherwise directed by the Organising Authority.
- 2.2. When not in use, coach vessels shall be appropriately berthed at the sailing venue in the allocated areas for coach vessels for the entire time that these SVR apply.

3. SAFETY

- 3.1. Coach vessels shall carry on board:
 - a) life jackets / buoyancy aid for all passengers and the driver;
 - b) first-aid kit;
 - c) VHF radio;
 - d) device for making a sound signal;
 - e) adequate anchor and tackle for conditions and depth;
 - f) operational engine kill cord (also known as a safety lanyard or automatic engine immobiliser);
 - g) hand pump or bailer;

- h) any additional safety equipment required by local maritime law.
- 3.2. Life jackets or PFD must be worn at all times when afloat. The kill cord must be used at all times when the engine is running.
- 3.3. The maximum plated / certified passenger limits for the vessel shall never exceed.
- 3.4. Team leaders are responsible for overseeing the safe operation of their coach vessels on the water, including knowledge of who is afloat and ensuring their safe return to the venue.
- 3.5. At all times, support persons including the registered driver(s) of a coach vessel shall comply with directions given by or under the authority of a Race Official. This includes assisting in rescue operations when requested to do so.
- 3.6. Coach vessels shall comply with local harbour and marina regulations, including speed limits.

4. GENERAL RESTRICTION

- 4.1. The registered driver(s) of a coach vessel will be responsible for the control of the vessel at all times and will be held responsible for any inappropriate behaviour, dangerous actions or improper practices, or actions affecting the fairness or safety of competition.
- 4.2. Support staff shall not leave any device, piece of equipment, buoy, marker or similar item permanently in the water. Temporary use of floating objects is allowed for current measurement. These objects shall be removed as soon as the measurement has been taken.
- 4.3. Coach vessels shall take particular care to minimise their wash when transiting the course areas.

5. DRONES

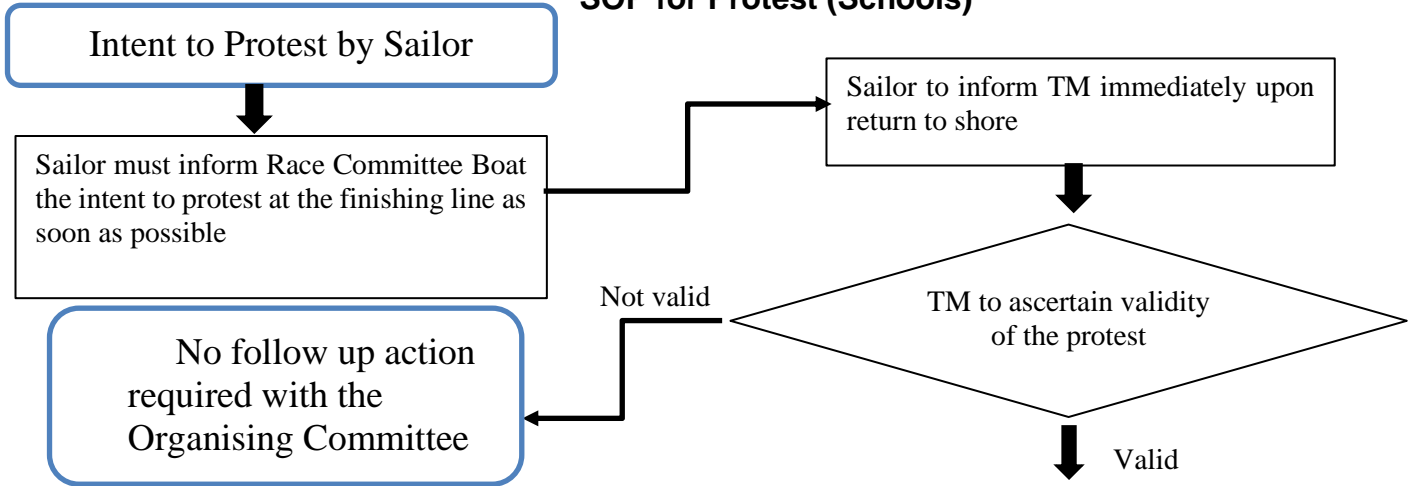
- 5.1. The use of drones is prohibited.

6. SUPPORT VESSEL RESTRICTED AREA

- 6.1. Support vessels shall stay outside areas where vessels are racing and shall not be:
 - a) closer than 100m to any vessel racing;
 - b) within 100m to leeward of the starting line or within 100m of its marks from the time of the preparatory signal until all boats have left the starting area or the Race Committee signals a postponement, general recall or abandonment;
 - c) between any boat racing and the next mark of the course;
 - d) between the inner and outer trapezoid courses when boats are racing on both courses;
 - e) within 100m of any mark of the course while boats are in the vicinity of that mark; and
 - f) within 100m of the finishing line and marks while boats are finishing.
- 6.2. Support vessels should proceed around the racing area in such a way to minimise the effect their wash will have on boats racing. Vessels that are motoring above five knots shall remain at least 100m from any boat racing.
- 6.3. Between sequences of races or when all racing for that Course Area has been postponed or abandoned, support vessels may enter the Course Area to service their athletes but shall restrict their speed to five knots. If further racing is to take place, support vessels shall then comply with the applicable SVR.

ATTACHMENT 5

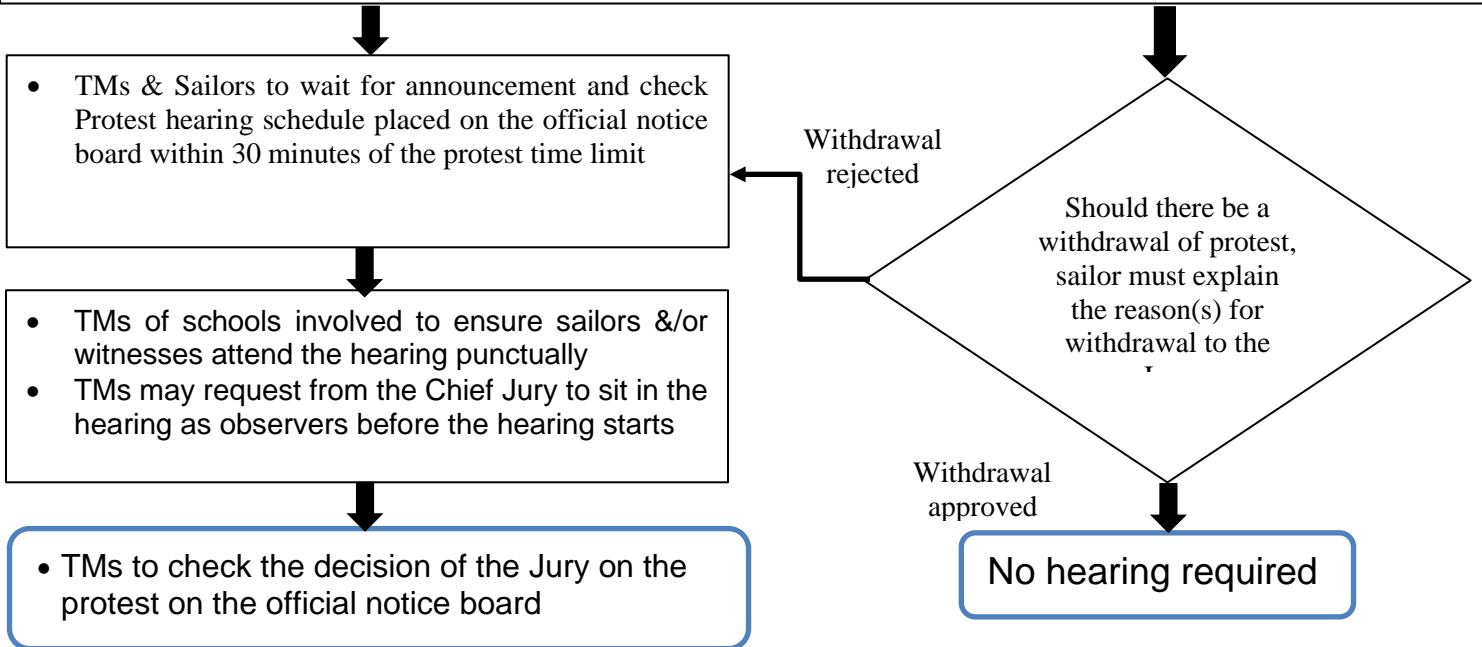
**National School Games Sailing Championships
SOP for Protest (Schools)**



TM to assist in the following:

- Ensure sailor fills in the hardcopy Protest Form (request from Race Control Office).
- Inform the sailor that your sailor is protesting against before submission of the Protest Form.
- Submit form to Race Secretariat within the protest time limit (posted on official online notice board)

Note: Protest time limit starts 60 minutes from the last boat that crosses the line of that course or from the time the race committee signals no more racing, whichever is later.



Note: Decision of the Protest committee shall be final as provided in rule 70.5(b) in the Racing Rules of Sailing 2021 – 2024

70.5 There shall be no appeal from the decisions of an international jury constituted in compliance with Appendix N. Furthermore, if the notice of race and the sailing instructions so state, the right of appeal may be denied provided that (b) a national authority so approves for a particular event open only to entrants under its own jurisdiction.

ATTACHMENT 6

**National School Games Sailing Championships
SOP for Scoring Review and Redress**

